

CHOIR CALL 7:15pm SHARP-Social Rm

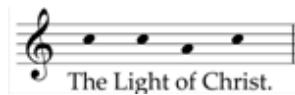
BRASS CALL 8:45-9:00pm via back door, service in progress, night light only in hallway

MASS OF CREATION

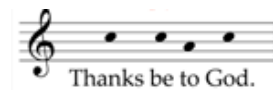
<https://www.youtube.com/watch?v=dZmzLbmMfoU>Gloria @ 0:00; Holy @ 5:26; When we eat @ 11:40; Amen @ 11:08;
Lamb of God @12:44HYMN BOARD [1152](#)

Choir gathers in choir loft with unlit candles. One choir runner at front pew section to receive flame.

PROCESSION Dcn Stuart:



ALL:



Choir runner brings flame into choir loft.

SOME CHURCH LIGHTS COME ON AS SOON AS PASCHAL CANDLE IS PLACED IN ITS STAND

EXSULTET	Easter Proclamation, Inwood	DCN STUART
1 st PSALM	#88: Ps 104: Lord, Send Out Your Spirit, Haugen (vv. 1, 3, 4, 5, 7)	ALIDA
3 rd PSALM	#117: Exodus 15: Let Us Sing to the Lord, Soper	MARCIA
5 th PSALM	#1458: Isaiah 12: You Will Draw Water Joyfully, Guimont (GLP p54)	ANNE
7 th PSALM	#1361: Psalm 42: Like a Deer, Guimont (GLP p56)	KATHARINE

ALTAR CANDLES ARE LIT

#253

GLORY TO GOD: Mass of Creation (MOC) Laura & Lewis RING BELLS THROUGHOUT
Trumpets from scoreKATHARINE – Refrain intonation and Assembly cue plus Verse 1
(step back on Refrain)

ALIDA - Verse 2 (step back on Refrain)

ANNE - Verse 3 (step back on Refrain)

EASTER ALLELUIA	#1160: Psalm 118 & Alleluia, Mode VIII (RSLP p69)	MARCIA
LITANY OF SAINTS (Say "Please stand" if no one else does)	#1161: RM3	MARCIA
WATER BLESSING	#1162 Springs of Water, RM3 (NEW) (Intro "Springs of water, bless the Lord," THEN Cantor sings once, THEN ALL sing)	KATHARINE
BAPTISMAL ACC	#1163 YOU Have Put on Christ REFRAIN, Hughes 4-measure Intro, Cantor, then All after FIRST baptism; 4-measure Intro plus ONE REFRAIN ONLY after each successive baptism	KATHARINE

INSTRUMENTAL Played as newly baptized move from font to foot of altar

DEACON CUES (from ambo) to STOP MUSIC when all are in place.

RECEPTION/CONFIRMATION/AFFIRMATION

ORDER OF MUSIC - EASTER VIGIL - PAGE 2

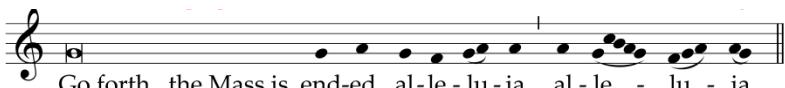
SPRINKLING **#1015 WE Have Put on Christ**, Hughes (NEW) **KATHARINE**
(4-measure Intro, then ALL sing Refrain immediately; Cantor sings verses as needed, with CHOIR entering at "Sing out your praise", and ALL singing Refrains; STOP when clergy return to altar area.

PREP ALTAR/GIFTS **ANTHEM: The Day of Resurrection, Shephard**
Trumpet part as written, ff. by trumpet duets during incensing

EUCH ACCS **MOC - NO CANTOR (Chloe cues)**
Trumpets: **#259 HOLY**
 #262 WHEN WE EAT
 #266 AMEN
 #268 LAMB OF GOD (brass?)

Communion #1 **#622: Alleluia! Jesus Is Risen!**
Verses 1 and 3: Choir; Verses 2, 4, 5: ALL) **ANNE CUES ASSEMBLY VERSES**
Trumpet verses tbd

Communion #2 **#626 Let Christians All Their Voices Raise, Siwek**
(Refrain Intro, then ALL sing immediately; ANNE at podium)
Trumpets on Refrains
CHOIR TO COMMUNION

DISMISSAL 
Go forth, the Mass is end-ed, al-le-lu-ia, al-le-lu-ia.


Thanks be to God, al-le-lu-ia, al-le-lu-ia.

CLOSING **#614 Jesus Christ Is Risen Today, vv. 1, 2, 4** **NO CANTOR - Chloe cues**
v. 1: Trumpet 1
v. 2: Trumpet 2
v. 4 (third v): Trumpets 1 & 2

POSTLUDE **ORGAN**